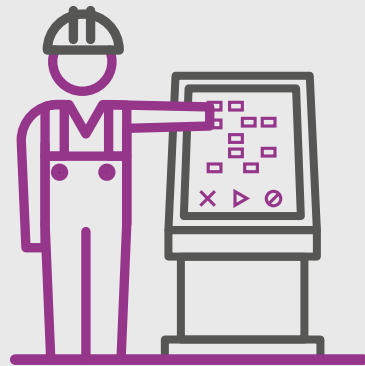
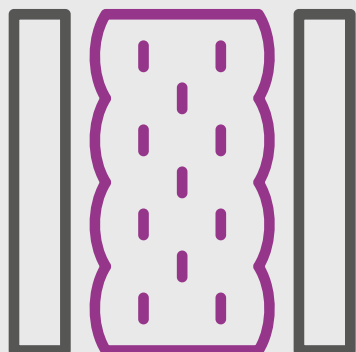


HOW AN INNOVARE HOUSE CAN ACHIEVE LOWER EMBODIED CARBON

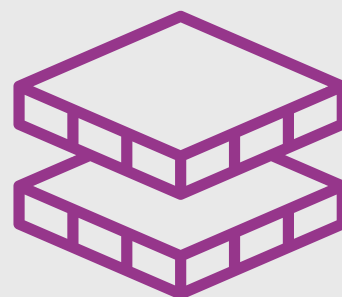
Factory construction optimises material use as materials to be ordered in bulk and off-cuts or over-orders can be reused



On-site waste generation of off-site prefabrication is low compared to conventional construction



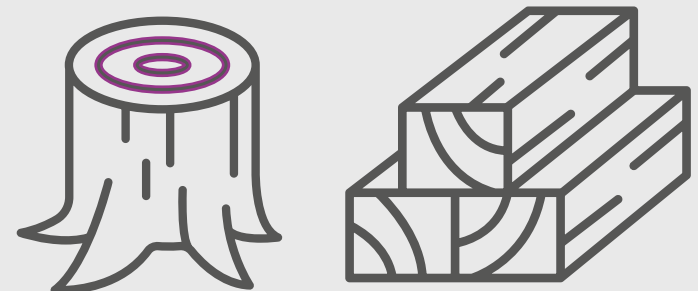
Mineral wool insulation, a natural, fully recyclable material of low embodied carbon, is used in the roofs



The frame and plates are made of OSB boards and softwood timber, which are natural materials with low embodied carbon



The structure follows lean design principles and is lightweight



The FSC/PEFC certified timber acts as a carbon store over the building's lifetime due to its ability to sequester carbon. This is 'released' at the end-of-life as per RICS guidance, explaining the relatively high Module C carbon