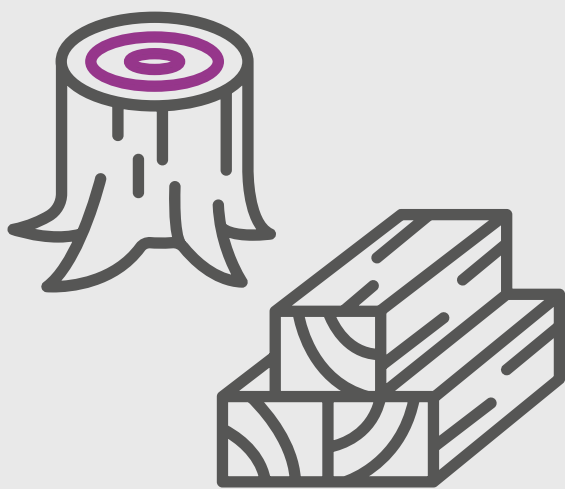
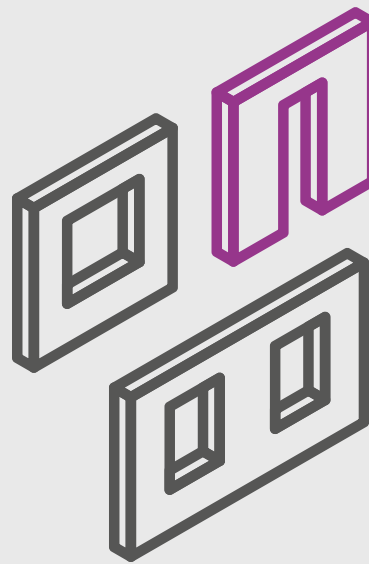


MOVE TOWARDS NET ZERO CARBON FASTER AND EASIER
THROUGH A COMBINATION OF MATERIALS AND METHODS

MATERIALS

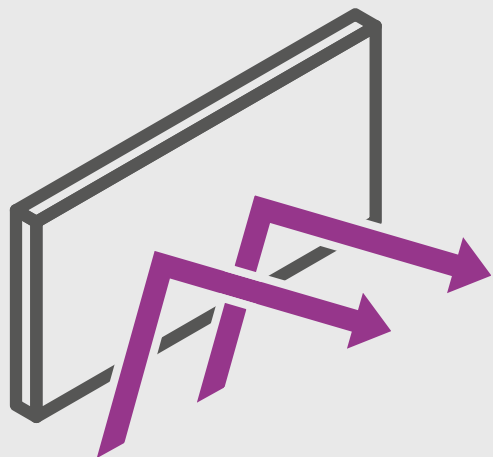


Responsibly sourced and renewable timber based construction

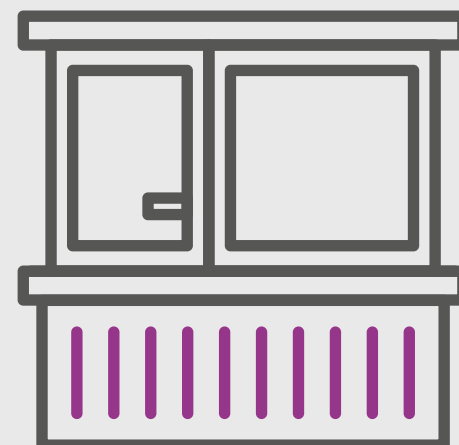


SIP panels can be engineered to different sizes, thickness and surface treatments to optimise efficiency of construction and maintenance

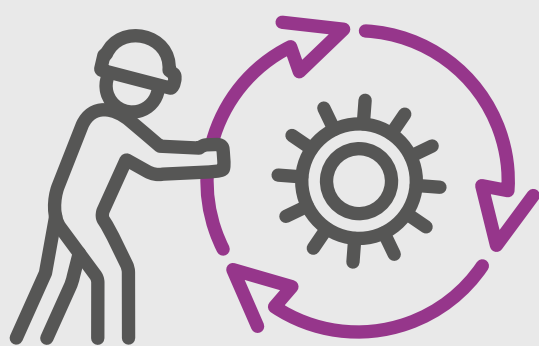
Thermal properties built into the structural envelope for improved insulation and energy efficiency



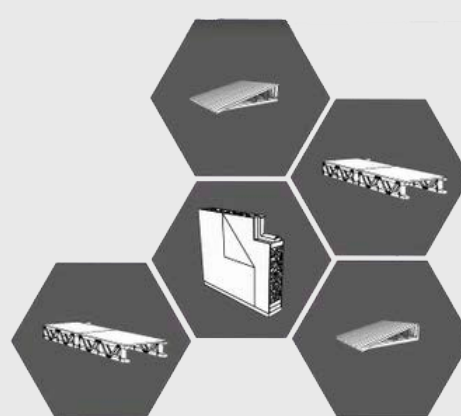
Component model helps maximise PMV



METHODS



Manufacturing based model improves efficiency and quality with greater consistency and reduced tolerances



Kits of parts allows greater opportunity to blend benefits of standardisation with creativity of design through a systemised design framework

UK based design to delivery capability means reduced interfaces, transport and supply chain



Technology led construction with BIM and 3D design improve clash detection and avoidance to build value in from the outset

