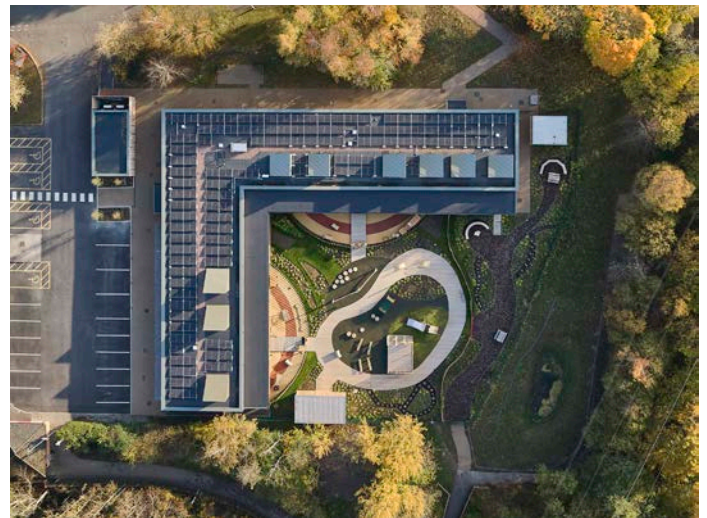




Staffordshire University Nursery & Forest School



Project	Staffordshire University Nursery & Forest School
Client	Staffordshire University
Contractor	Henry Brothers Construction

Architect	Feilden Clegg Bradley Studios
Value	£4.4m
Location	Leek Road Site, Stoke-on-Trent
GIFA	1,000m ²

Based on the building fabric targets of Passivhaus standards and utilising the latest green technologies the net-zero purpose built facility provides a full day care nursery with a 24-place classroom and observational suite with leading digital technology.

[See full details...](#)





Staffordshire University Nursery & Forest School

PROJECT SUMMARY

Located close to the University's nature reserve, this brand new £4.4m carbon neutral facility, brings the forest setting to the University's city campus. It is not only connected with its landscaped and idyllic surroundings, but also provides inspirational and flexible learning spaces that offer developing children digital experiences too.

More than doubling the capacity of the University's previous nursery premises, the new provision provides 100 full day-care places for children aged from 0 to five. It also has the capacity to provide childcare and education for children from five to 12 years outside of term time.

The new nursery provision also incorporates a forest school facility that develops links with local schools and provides community participation opportunities.

Single storey with Glulam timber frame, sustainable panelised superstructure solution with timber cladding and an external timber canopy covered walkway for social interaction. The building has a high-performance Innovaré Offsite envelope which is highly energy efficient, with the wider build incorporating measures such as Air Source Heat Pumps, Passive Cooling and roof mounted solar PV.

KEY FEATURES IN THE NURSERY AND FOREST SCHOOL:

- Four inspirational learning spaces with areas for food preparation and wet play as well as flexible floor space.
- An authentic woodland experience for schools, especially those based in the city.
- Opportunities to experience countless outdoor learning opportunities such as identifying nature, play-based learning, den building and forest art.
- Gain digital experiences to help develop prerequisite skills to support future learning within a fast-paced digital world.
- Play and learn in large, landscaped play areas.
- Observational suite with leading digital technology to facilitate applied learning for trainee teachers, social workers, and University students.

In its first year, Woodlands Day Nursery and Forest School was recognised with two awards, Construction Project of the Year in the CEF Awards 2022, and the Sustainability award at West Midlands Insider Property Awards 2022.



The Judges, West Midlands Insider Property Awards 2022, said:

"This Net Zero carbon scheme is both a great example of what can be achieved with educational facilities and a fantastic tool in which to inspire the next generation to think more sustainably in their daily lives."



Simon Branson – Partner, Feilden Clegg Bradley Studios, said:

"Using a highly insulated prefabricated timber structure for the construction, plentiful north and west light from the rooflights and natural ventilation, it not only has a low impact on the environment but a connection to it, allowing its users to benefit to the utmost,"



Sally McGill, Chief Financial Officer and Executive Lead for Sustainability at Staffordshire University, said:

"As the first carbon neutral building on the Staffordshire University Campus, the Woodlands Day Nursery and Forest School is a facility that supports the community and the next generation, through learning, teaching, and embedding the University's ambitions for a more sustainable future. Building on our current pilot phase, we look forward to the further opportunities and experiences this exciting new facility will bring to children and schools in the local area."