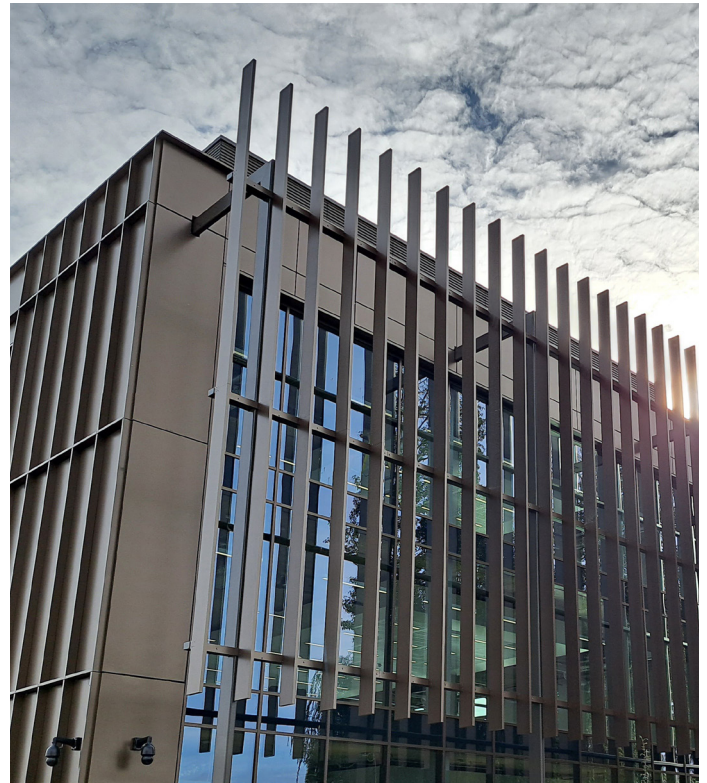




# Unity Campus - Sawston Cambridge



**Phase 2 of a new £100 million technology and R&D campus is Sawston, south Cambridge is now complete and provides an additional circa 90,000 sq. ft of science laboratory space across three buildings. Built on Cambridge’s well-established reputation within life sciences, this second phase, delivered by Morgan Sindall Constructions Cambridge office enhances the facilities at Unity Campus and elevates the region’s role within the industry further.**

Designed by Nicolas Hare architects the building envelope is purposely designed to provide occupants with a healthy and attractive internal environment. Collaborative design development to increase efficiency, incorporating a primary concrete frame and the use of advanced structural timber technology meant an innovative approach to the design and construction method could be adopted. This brought key advantages of sustainability and performance efficiency that the Innovare Offsite BOPAS Accredited i-FAST wrap solution provides.

The Innovare Offsite i-FAST Panels were selected for construction because they can minimize embodied carbon in comparison to steel framing systems and achieve the key sustainability objectives set by the client Howard Group. Through effective collaboration with the architects a completed construction design also meant that the client’s performance specifications were agreed well in advance of the start on site date.

Project	Unity Campus
Client	Howard Group
Contractor	Morgan Sindall Construction
Architect	Nicholas Hare Architects
Value	£12m
Location	Sawston, Cambridge
Completion Date	June 2023
Innovare duration onsite	15 Weeks
GIFA m <sup>2</sup>	88,000 sq. ft
Air Tightness	1 via passive purple
U-Value	0.13 (259mm i-FAST with additional insulation by others on inside face of panel)
System	i-FAST/Wrap Solution