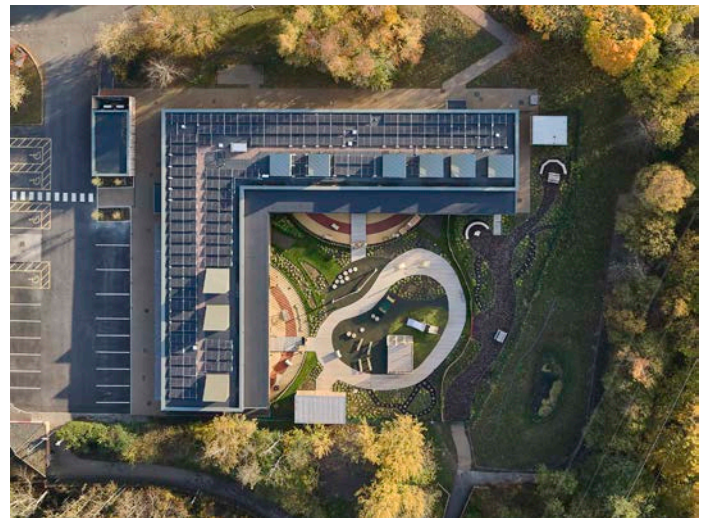




Staffordshire University Nursery & Forest School



Project	Staffordshire University Nursery & Forest School
Client	Staffordshire University
Contractor	Henry Brothers Construction

Architect	Feilden Clegg Bradley Studios
Value	£4.4m
Location	Leek Road Site, Stoke-on-Trent
GIFA	1,000m ²

Based on the building fabric targets of Passivhaus standards and utilising the latest green technologies the net-zero purpose built facility provides a full day care nursery with a 24-place classroom and observational suite with leading digital technology.

See full details...





Staffordshire University Nursery & Forest School

PROJECT SUMMARY

Located close to the University's nature reserve, this brand new £4.4m facility, targets zero-carbon upon completion, and features four inspirational learning spaces enhanced with digital technology and a forest school provision.

More than doubling the nursery's existing capacity, the new provision provides 100 full day-care places for children aged from 0 to five. It will also have the capacity to provide childcare and education for children from five to 12 years outside of term time.

The new nursery provision also incorporates a forest school facility that develops links with local schools, provide community participation opportunities, and create income generation for the university.

Single storey with Glulam timber frame, sustainable panelised superstructure solution with timber cladding and an external timber canopy covered walkway for social interaction.

The building has a high-performance Innovaré Offsite envelope which is highly energy efficient, with the wider build incorporating measures such as Air Source Heat Pumps, Passive Cooling and roof mounted solar PV.

KEY FEATURES IN THE NURSERY AND FOREST SCHOOL:

- Four inspirational learning spaces with areas for food preparation and wet play as well as flexible floor space.
- An authentic woodland experience for schools, especially those based in the city.
- Opportunities to experience countless outdoor learning opportunities such as identifying nature, play-based learning, den building and forest art.
- Gain digital experiences to help develop prerequisite skills to support future learning within a fast-paced digital world.
- Play and learn in large, landscaped play areas.
- Observational suite with leading digital technology to facilitate applied learning for trainee teachers, social workers, and University students.

In its first year, Woodlands Day Nursery and Forest School was recognised with two awards, Construction Project of the Year in the CEF Awards 2022, and the Sustainability award at West Midlands Insider Property Awards 2022.



The Judges, West Midlands Insider Property Awards 2022, said:

"This Net Zero carbon scheme is both a great example of what can be achieved with educational facilities and a fantastic tool in which to inspire the next generation to think more sustainably in their daily lives."



Simon Branson – Partner, Feilden Clegg Bradley Studios, said:

"Using a highly insulated prefabricated timber structure for the construction, plentiful north and west light from the rooflights and natural ventilation, it not only has a low impact on the environment but a connection to it, allowing its users to benefit to the utmost,"



Sally McGill, Chief Financial Officer and Deputy Chief Executive at Staffordshire University, said:

"We are committed to building a sustainable University and reducing our environmental impact. Targeting zero carbon on completion, our new nursery and forest school will be our greenest facility on campus and builds upon other campus initiatives such as Electric Vehicle Charging points. "We very much look forward to opening our fabulous Woodlands Nursery and welcoming in the children, families and Early Year Practitioners and teachers who will make use of these modern facilities and help grow our new Forest School provision."